



South Street, Epsom

The PERSONAL Agent



# Offers Over £90,000

## Leasehold

- Retirement development
- Second floor apartment
- One double bedroom
- Fitted Kitchen
- Dual aspect lounge
- No onward chain
- Warden manager
- 24 hr emergency call system
- Residents lounge & kitchen
- Close to High Street & Station

Tucked away in a small development on the periphery of Epsom High Street, this generous one double bedroom, second floor retirement apartment is surrounded by well maintained communal grounds and offered to the market with no onward chain.

Enjoying a truly convenient position with easy access to the high street, Ashley Centre shopping facilities, Marks and Spencer, Waitrose and the railway station with excellent links to London, finding a better positioned property would be a difficult task indeed.

Benefitting from a warden manager and a 24 hr emergency call system, this over 60's development is also very close to the open parkland of the adjoining Mounthill Gardens and a stones' throw of Rosebery Park.

Viewing is strongly advised by vendors Sole agent.



Saddlers Court was constructed by McCarthy & Stone (Developments) Ltd in the late 1990's and comprises 42 properties arranged over 4 floors served by a lift. The Development Manager can be contacted from various points within each property in the case of an emergency.

For periods when the Development Manager is off duty there is a 24 hour emergency Appello call system. Accommodation comprises an entrance hall, lounge, kitchen, double bedroom with ample fitted wardrobes and bathroom.

It is a condition of purchase that single residents be over the age of 60 years, or in the event of a couple, one must be over the age of 60 years and the other over 55 years.

Epsom High Street has a variety of shops, the Ashley Centre - a covered shopping mall and Epsom Playhouse which offers a wide range of entertainment, including films and concerts. The Rainbow Leisure Centre & David Lloyd Centre feature pool, gym and other sports facilities. There is also a wide variety of cafés,

restaurants and pubs available locally.

Epsom is a popular commuter town, located to the south west of London and offers a good mix of state and independent schools for all age groups. Also close by is Epsom Downs, the home of The Derby. The M25 (Junction 9) is a short drive away giving access to both Heathrow and Gatwick international airports.

Tenure - Leasehold

Length of lease (years remaining) - 98

Annual ground rent amount (£) - 615.46

Annual service charge amount (£) - 3503.46

Council tax band - D

PLEASE NOTE: Whilst we believe the information above to be correct, we are unable to guarantee this information until such time as we have formally verified it with the sellers. Therefore you are advised to clarify any information with your chosen legal representative before proceeding with the purchase of this property.





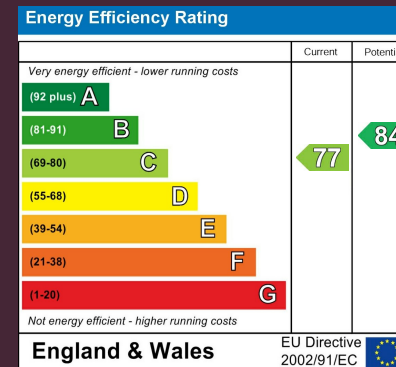
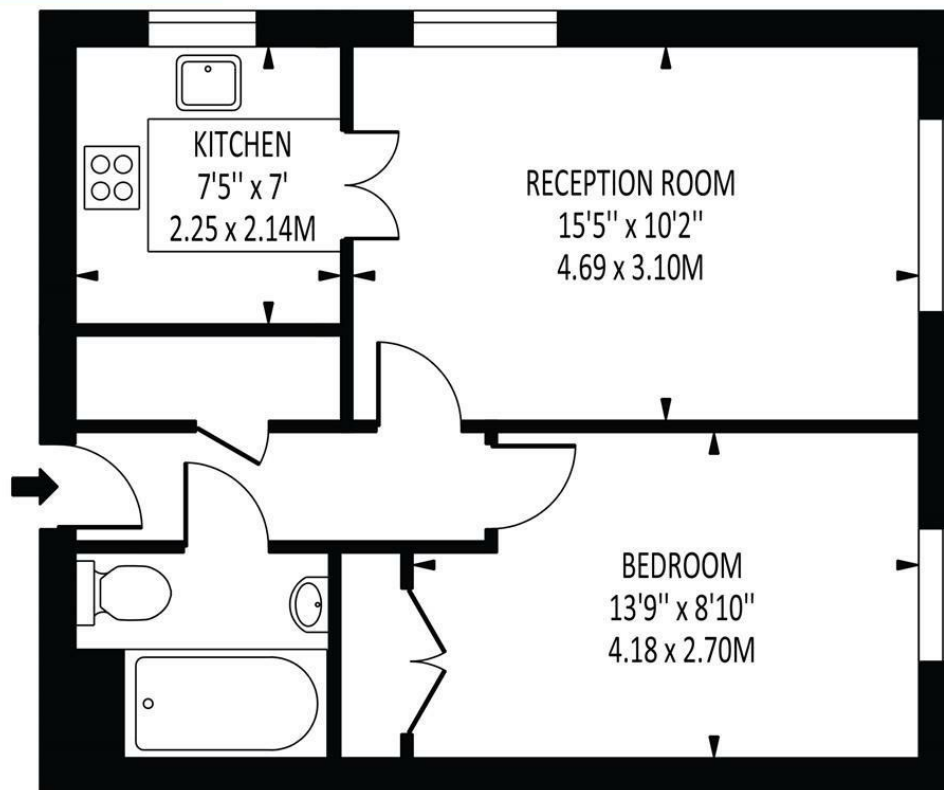




The **PERSONAL** Agent



**Saddlers Court**  
Total Area: 441 SQ FT • 40.94 SQ M



Disclaimer: For Illustration Purposes only  
This floor plan should be used as a general outline for guidance only and does not constitute in whole or in part an offer of contract.  
Any intending purchaser or lessee should satisfy themselves by inspection, searches, enquiries and full survey as to the correctness of each statement.  
Any areas, measurements or distances quoted are approximate and should not be used to value a property or be the basis of any sale or let.

**EPSOM OFFICE**  
2 West Street  
Epsom, Surrey, KT18 7RG  
01372 745 850

**STONELEIGH/EWELL OFFICE**  
62 Stoneleigh Broadway  
Stoneleigh, Surrey, KT17 2HS  
020 8393 9411

**BANSTEAD OFFICE**  
141 High Street  
Banstead, Surrey, SM7 2NS  
01737 333 699

**TADWORTH OFFICE**  
Station Approach Road  
Tadworth, Surrey, KT20 5AG  
01737 814 900

**LETTINGS & MANAGEMENT**  
157 High Street  
Epsom, Surrey KT19 8EW  
01372 726 666

The  
**PERSONAL**  
Agent

The Personal Agent Ltd. Registered office: 2A Boston Rd, Henley-on-Thames RG9 1DY.  
Registered in England No. 4398817.



**Please Note:** Whilst every attempt has been made to ensure the accuracy of the floorplans contained here, measurements of doors, windows and room areas are approximate and no responsibility is taken for any error, omission or mis-statement. These plans are for representation purposes only and should be used as such by and prospective purchaser. The services, systems and appliances listed in the specification have not been tested by The Personal Agent and no guarantee as to their operating ability or their efficiency can be given. All images and text used to advertise our properties are for the sole use of The Personal Agent Ltd.



